



# Wyvern **Uniform**

College

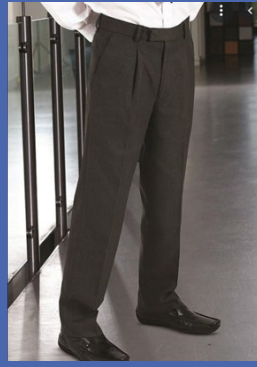
## The Basics



- College Blazer or Jumper
- Wyvern plaid skirt (knee length) or grey trousers
- Wyvern tie



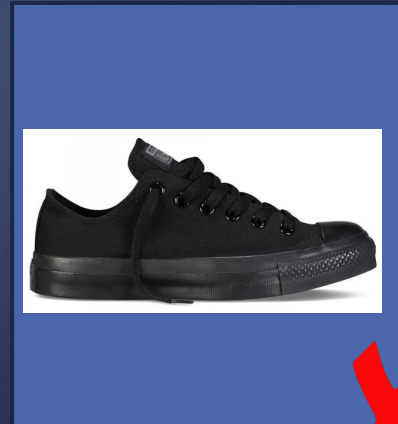
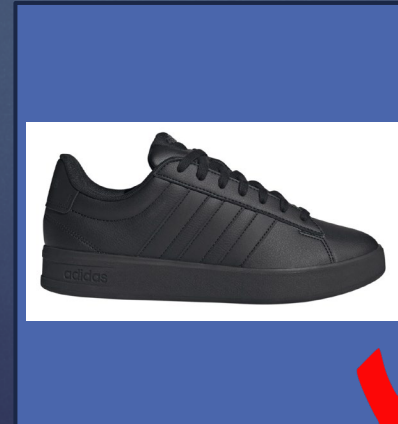
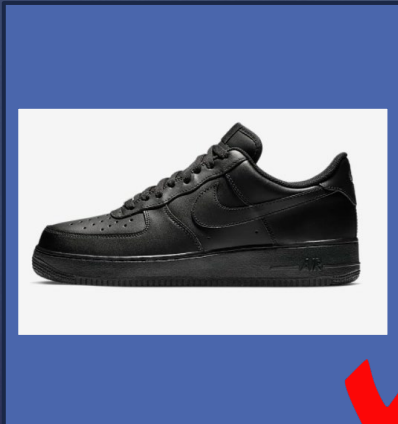
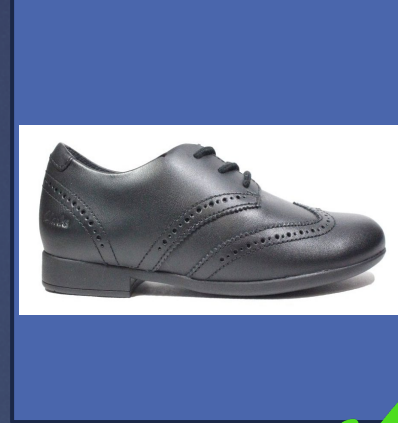
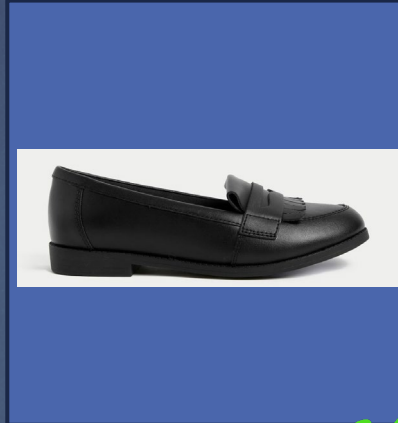
## Trousers



- Mid/dark grey in colour
- Worn at the waist
- Formal tailored trousers
- Cover the ankle and touch the top of the shoe
- Not jersey fabric or stretchy material



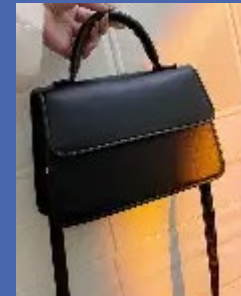
## Shoes



- Plain black leather or pleather
- No trainers, boots, toe caps, platforms, canvas or plimsoles
- No logos or labels e.g. Nike, Adidas, converse, vans



## Accessories



- Bags- should fit an A4 ring binder, pencil case and other equipment
- Belt- plain black no logos or branding on band or buckle



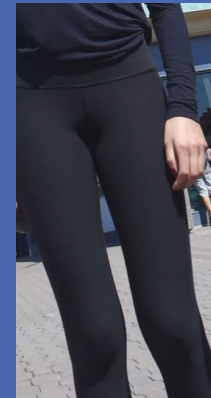
## Coats/outerwear



- Must be waterproof with a hood
- No excessive logos
- No leather/pleather /denim
- No fur/faux fur
- No outer garments that are jersey, sweatshirt or other non waterproof fabrics



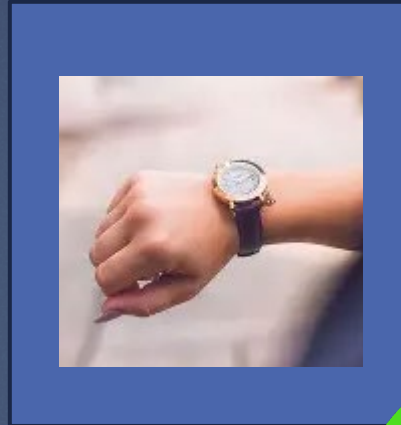
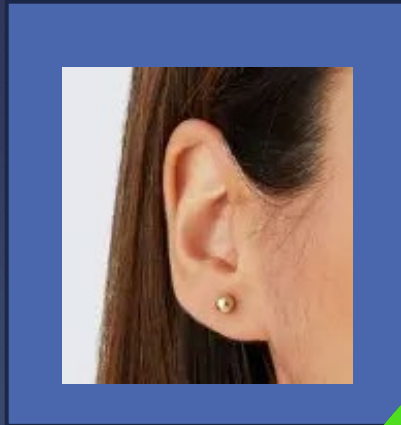
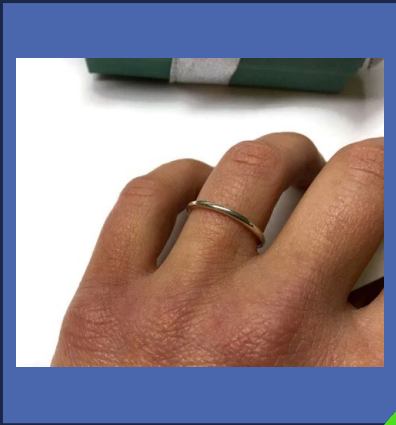
## Socks and Tights



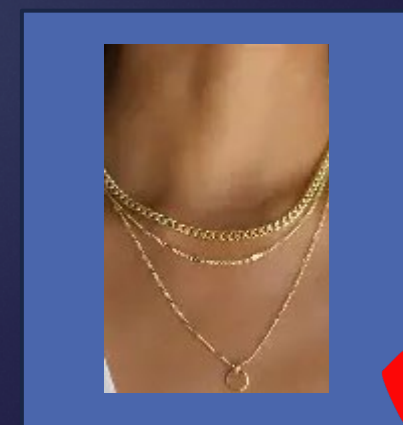
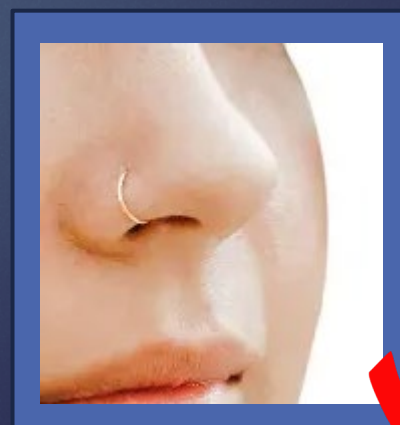
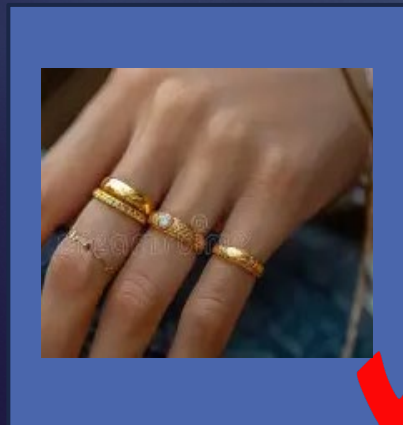
- Socks can be plain navy, black or white and should be ankle length
- Tights can be black, navy or skin coloured
- No socks to be worn over tights
- No leggings



## Jewellery

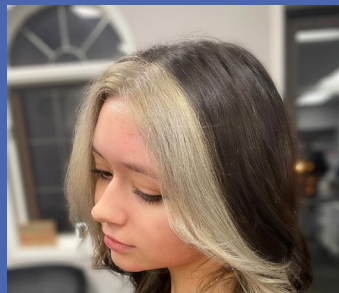


- One plain ring
- One non-smartwatch
- One plain metal stud in the lower lobe- no gems, hoops or decorative designs
- No nose studs, retainers or body piercings
- No necklaces
- No badges on blazers other than those issued by Wyvern





## Hair



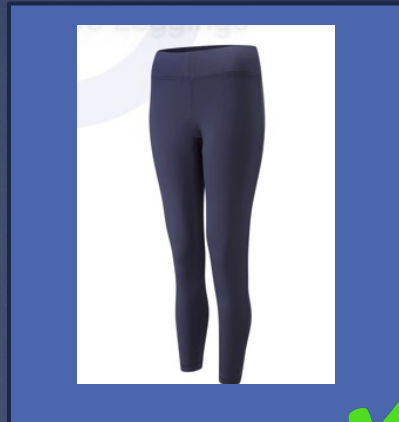
- Modest in style and colour
- No two-tone hair or extensions
- No extreme hairstyles
- No braids that are not the natural hair colour.
- Hair longer than shoulder length must be tied up for practical subjects
- Hair coverings for religious purposes must be plain dark uniform colours or white.



# Wyvern **Uniform**

College

## PE Kit



- Wyvern PE shirt
- Navy PE shorts
- White socks or knee high navy socks
- Astro-turf trainers or moulded football boots only
- Canvas plimsols, trail shoes and fashion trainers with extra grip are not permitted.